



**PROTEXT**

— MOBILITY INC. —

**\$TXTM**

**LIVE PLANT  
EXTRACTION**

PRESENTATION DECK.





# PROTEXT

— MOBILITY INC. —

(\$TXTM)

ENGINEERING THE INFRASTRUCTURE LAYER BETWEEN:  
BIOLOGY • PHARMACEUTICAL SCIENCE • DIGITAL CAPITAL MARKETS

## NEXT-GENERATION:



BIOTECHNOLOGY



ACTIVE PHARMACEUTICAL INGREDIENT (API) INFRASTRUCTURE



LIVE PLANT EXTRACTION TECHNOLOGY



NANOTECHNOLOGY-ENHANCED BIOAVAILABILITY



REAL-WORLD ASSET (RWA) INFRASTRUCTURE



TOKENIZATION & DIGITAL FINANCIAL SYSTEMS



**PROTEXT**  
MOBILITY INC.  
(\$XTM)

# THE GLOBAL OPPORTUNITY

## THE WORLD IS SHIFTING TOWARD:



- PLANT-BASED THERAPEUTICS



- HIGH-BIOAVAILABILITY APIs



- SUSTAINABLE PHARMACEUTICAL SYSTEMS



- TOKENIZED REAL-WORLD ASSETS



- DIGITAL GLOBAL CAPITAL FLOWS



## TRADITIONAL BIOTECH REMAINS:



- CAPITAL INTENSIVE



- HIGHLY DILUTIVE



- SLOW TO SCALE



- DISCONNECTED FROM DIGITAL FINANCE



TXTM's strategy seeks to **unify** these **disconnected systems** into a **scalable infrastructure model**.

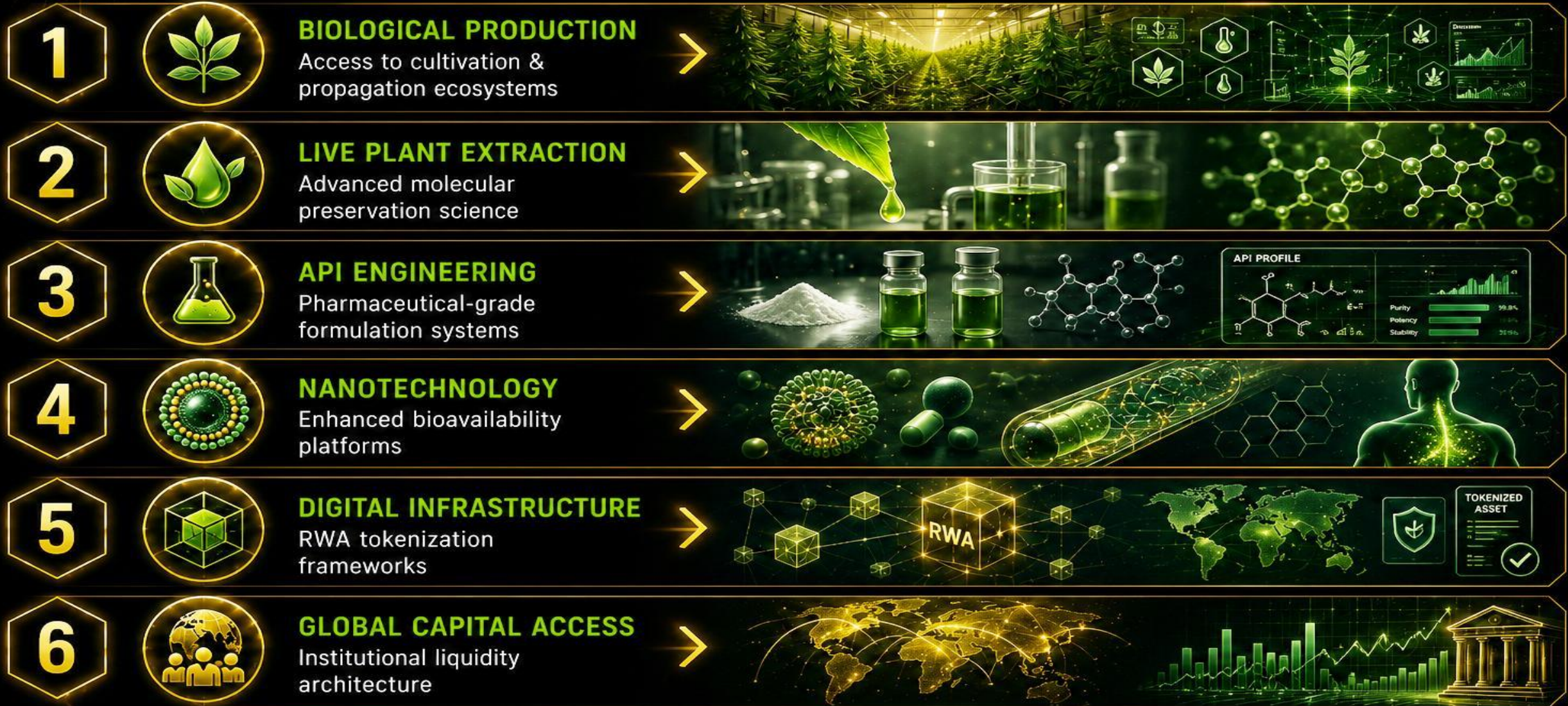




**PROTEXT**  
MOBILITY INC.  
(\$XTM)

# CORE PLATFORM ARCHITECTURE

SIX INTEGRATED OPERATIONAL LAYERS





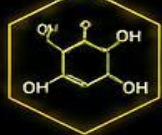
# THE SCIENCE ENGINE

## LIVE PLANT EXTRACTION TECHNOLOGY

### OBJECTIVES:



- FULL-SPECTRUM PHYTONUTRIENT RETENTION



- CANNABINOID ACID PRESERVATION



- IMPROVED BIOAVAILABILITY



- REDUCED DOSAGE REQUIREMENTS



- ADVANCED MOLECULAR STABILITY



- HIGHER THERAPEUTIC EFFICIENCY

TXM's extraction systems focus on preserving the **natural molecular integrity** of **live botanical compounds** prior to degradation.



LIVE PLANT MATERIAL



GENTLE MOLECULAR PRESERVATION



ACTIVE COMPOUND INTEGRITY



FULL-SPECTRUM EXTRACTION



ENHANCED BIOAVAILABILITY



SUPERIOR THERAPEUTIC OUTCOMES



PRESERVES NATURE'S INTELLIGENCE



MAINTAINS MOLECULAR INTEGRITY



PROTECTS CANNABINOID ACIDS & TERPENES



DELIVERS MAXIMUM POTENCY



ENHANCES PATIENT OUTCOMES



# TRADITIONAL EXTRACTION VS TXTM

## TRADITIONAL EXTRACTION

VS

## TXTM LIVE PLANT SYSTEMS



Thermal degradation



Molecular preservation



Lower absorption



Nano-enhanced bioavailability



Solvent-heavy processes



Advanced thermal principles



Reduced phytochemical retention



Full-spectrum preservation



Standard formulations



Pharmaceutical API focus



Commodity outputs



High-value API engineering



# API ENGINEERING PLATFORM

FROM RAW BIOMASS TO HIGH-VALUE APIs



## STAGE 1

Biological cultivation systems



**PREMIUM BIOMASS INPUT**  
Genetically selected strains.  
Optimized growth conditions.



## STAGE 2

Live plant extraction processing



**MOLECULAR PRESERVATION**  
Live plant extraction technology.  
Preserves full-spectrum phytonutrients.



## STAGE 3

Nano-enhanced formulations



**NANO TECHNOLOGY**  
Advanced delivery systems.  
Enhanced bioavailability and absorption.



## STAGE 4

Pharmaceutical-grade APIs



**PHARMACEUTICAL EXCELLENCE**  
API refinement and purification.  
Meets global pharmaceutical standards.



## STAGE 5

Tokenizable real-world assets



**DIGITAL ASSET INFRASTRUCTURE**  
Tokenized real-world assets.  
Bridging biology, science and finance.

INTEGRATED SCIENCE. PHARMACEUTICAL PRECISION. FINANCIAL INNOVATION.



**PROTEXT**  
MOBILITY INC.  
(\$XTM)

# TRULEAF HEALTH INTEGRATION

HIGH-BIOAVAILABILITY FORMULATION STRATEGY

The strategic integration with **TruLeaf Health** strengthens:



**CANNABINOID**  
FORMULATION DEVELOPMENT



**NANOTECHNOLOGY**  
DELIVERY SYSTEMS



**WELLNESS**  
COMMERCIALIZATION



**API**  
SCALABILITY



**GLOBAL MARKET**  
POSITIONING



**TruLeaf**  
HEALTH

ADVANCED SCIENCE.  
NATURAL WELLNESS.

## KEY SYNERGIES:



**LIVE PLANT**  
EXTRACTION



**ADVANCED**  
FORMULATIONS



**API**  
DEVELOPMENT



**BIOAVAILABILITY**  
OPTIMIZATION



**BOTANICAL**  
WELLNESS SYSTEMS



**PROTEXT**  
 MOBILITY INC.  
 (\$XTM)

# AGRICULTURAL INFRASTRUCTURE

LARGE-SCALE CULTIVATION ECOSYSTEMS

TXTM's broader ecosystem includes access to:

-  **PERMITS**
-  **CULTIVATION OPERATIONS**
-  **INDUSTRIAL HEMP INFRASTRUCTURE**
-  **REGENERATIVE FARMING METHODS**
-  **PROPAGATION PROGRAMS**
-  **GENETIC DEVELOPMENT INITIATIVES**
-  **ECO-FARMING SYSTEMS**
-  **SUSTAINABLE AGRICULTURE MODELS**



 **PERMITS**



 **CULTIVATION OPERATIONS**



 **INDUSTRIAL HEMP INFRASTRUCTURE**



 **REGENERATIVE FARMING METHODS**



 **PROPAGATION PROGRAMS**



 **GENETIC DEVELOPMENT INITIATIVES**



 **ECO-FARMING SYSTEMS**



 **SUSTAINABLE AGRICULTURE MODELS**



**OBJECTIVE:**

Build scalable **pharmaceutical-grade** biological supply systems.





# WHY TXTM IS DIFFERENT

**TXTM** is not simply:

- ✗ A CANNABIS COMPANY
- ✗ A CULTIVATION COMPANY
- ✗ A BIOTECH STARTUP
- ✗ A BLOCKCHAIN CONCEPT



**TXTM** IS BUILDING:

THE **INFRASTRUCTURE** LAYER BETWEEN:

**BIOLOGICAL PRODUCTION**

- CULTIVATION EXCELLENCE
- SUSTAINABLE SYSTEMS
- CONSISTENT QUALITY



**PHARMACEUTICAL SCIENCE**

- API RESEARCH & ENGINEERING
- PRECISION EXTRACTION
- SCIENCE-BACKED INNOVATION



**DIGITAL CAPITAL MARKETS**

- RWA TOKENIZATION
- GLOBAL LIQUIDITY
- TRANSPARENT MARKETS



REAL ASSETS.  
REAL SCIENCE.



DIGITAL INFRASTRUCTURE.  
INSTITUTIONAL GRADE.



POWERING THE FUTURE OF  
PHARMACEUTICAL FINANCE.



ONE PLATFORM.  
INFINITE POTENTIAL.



# THE LONG-TERM VISION

## BUILDING THE FUTURE OF:



ACTIVE PHARMACEUTICAL  
INGREDIENT INFRASTRUCTURE



TOKENIZED  
BIOLOGICAL ASSETS



HIGH-BIOAVAILABILITY  
BOTANICAL SYSTEMS



GLOBAL DIGITAL  
LIQUIDITY NETWORKS



NEXT-GENERATION  
PHARMACEUTICAL FINANCE



**LONG-TERM  
GOAL:**

Create a scalable bridge between  
biological production systems and  
digital global financial infrastructure.





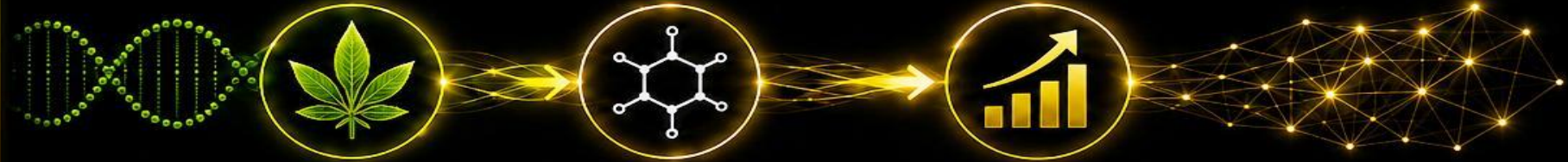
**PROTEXT**

— MOBILITY INC. —

(\$XTM)

# CONCLUSION

**ENGINEERING:**  
**BIOLOGY** → **APIs** → **DIGITAL FINANCE**



**FOCUSED ON:**



SCIENCE



INFRASTRUCTURE



SCALABILITY



DISCIPLINE



GLOBAL EXPANSION

**BUILDING:**

**THE NEXT GENERATION OF  
BIOLOGICAL-TO-DIGITAL INFRASTRUCTURE**





# PROTEXT

MOBILITY INC.

(\$XTM)

“ ENGINEERING THE FUTURE  
INFRASTRUCTURE LAYER BETWEEN **BIOLOGY**,  
**PHARMACEUTICAL SCIENCE**,  
AND **GLOBAL DIGITAL CAPITAL**. ”



BIOLOGICAL  
PRODUCTION



PHARMACEUTICAL  
SCIENCE



ACTIVE  
INGREDIENTS (APIs)



DIGITAL CAPITAL  
MARKETS



GLOBAL  
INFRASTRUCTURE

# FORWARD-LOOKING STATEMENT



This presentation contains **forward-looking statements** regarding future business operations, strategic initiatives, financial performance, technological developments, commercialization pathways, regulatory positioning, tokenization infrastructure, exchange uplisting objectives, and global expansion strategies.



**Actual results may differ materially** due to regulatory, operational, financial, technological, market, geopolitical, and compliance-related risks.



This presentation is for **informational purposes only** and does not constitute an offer to sell or solicitation to purchase securities.